

2021

SYSTEMS BUILDING



POPULATION 0-4

Teller 814
Park 693



PARTNERS

33



Teller Licensed Provider

Family Childcare: 4

Programs: 10

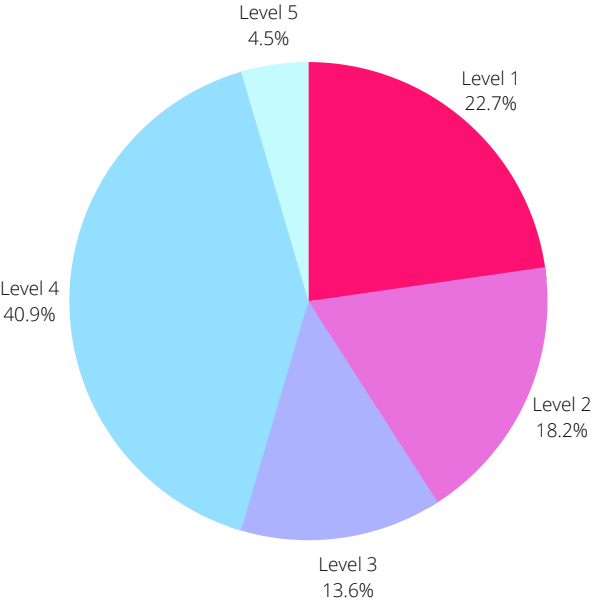
4 No longer operating going into 2022

Park Licensed Provider

Family Childcare: 5

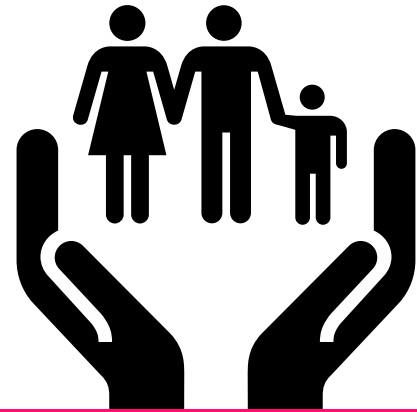
Programs: 3

1 No longer operating going into 2022



Colorado Shines Rating

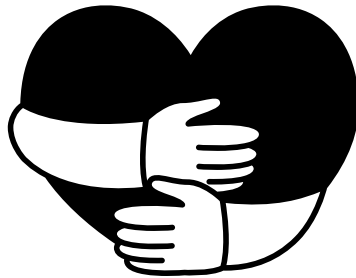
FAMILY SUPPORT & EDUCATION



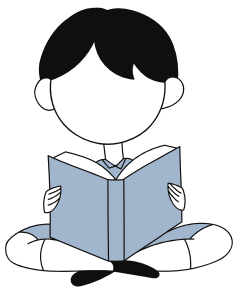
- Hosted a Preschool Community Input Session
- Engaged in six (6) community events to present and/or share information with families, community and/or community agencies regarding the importance of quality childcare, developmentally appropriate practice, and opportunities to advocate.
- TPECC provided FREE diapers, wipes and specialty formula to the community
- TPECC offered a virtual showing of *No Small Matter*
- Supported children's healthy development and learning by participating in developmental screenings

HEALTH & WELL-BEING

A total of 5696 hours of direct Early Childhood Mental Health (ECMH) consultation were provided in El Paso, Teller, and Park Counties combined.



you are valid



LEARNING & DEVELOPMENT

3 COACH
CONTRACTORS

406 Direct Coaching
Hours

16 Colorado Shines
signed MOU's

\$6342.04 Quality
Improvement Materials

Credential level 3 or
higher is 49%.

TPECC offered 26 direct
training hours